

06/16/07 The Wedge Approach to the Booklet



xx

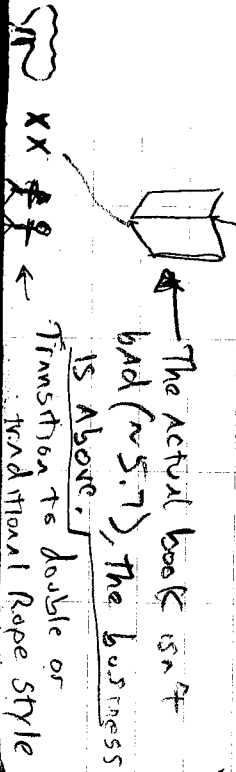
The Wedge
5.5R



Lunch ledge
At Whitefish

In this situation we were on a schedule trying to get to a harder climb (so clients are skilled), and the bolts are good, so climb with both clients tied/clipped into one rope.

The Booklet 5.9



Rappel down first then rap two clients

The key to this climb is the rappels, you can get down in two rappels, but the second rappel won't

go all the way to safety, so caution the two clients, ~~one blue knot~~ on red, they clip ~~the blue knot~~ into a ~~big~~ ~~of~~ red, ~~down~~ from blue,

Then the one into red and clip one into Red, then (Skill tied into blue) hike up slope until red is safe (Rappel knot must be on red side), then hike down until red knot jams. Again, then unclip from blue, then pull red until you are down to safety.